

WA State Department of Natural Resources

**Annual State Land Acquisition
Coordinating Forum**

October 30, 2013



TRUST LAND TRANSFER PROGRAM

Goals



- Provide revenue for K-12 Schools
- Protect lands that have special ecological and/or social attributes
- Divest of revenue challenged properties and reinvest in revenue productive working forest land

TRUST LAND TRANSFER PROGRAM

Historical Summary

- Program began in 89-91
- Appropriations through 11-13 :
\$798,570,000
- Average \$61.7 million

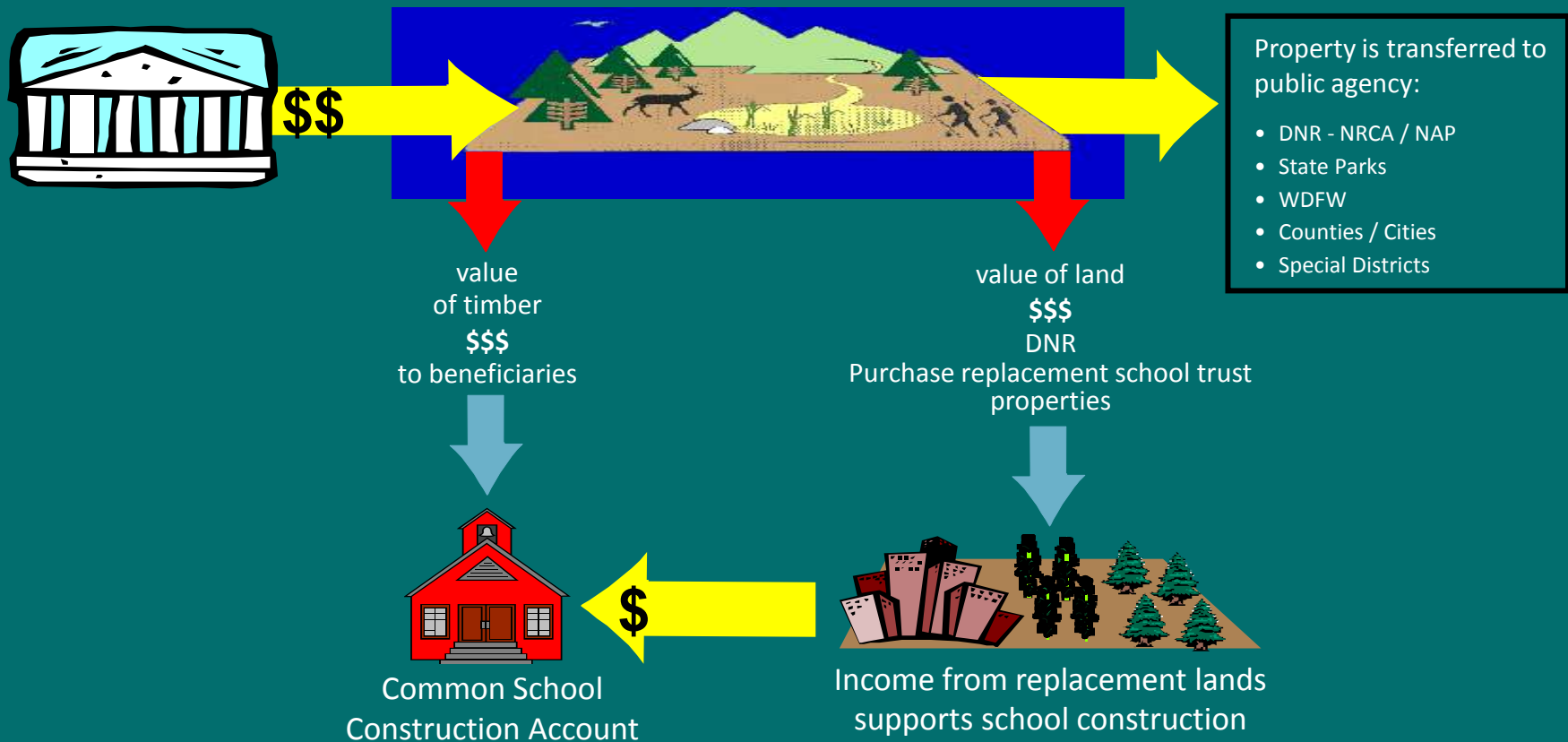


TRUST LAND TRANSFER PROGRAM

Process

Legislative funds serve dual purpose:

1. Provide revenue for school construction
2. Acquire special properties for public benefit



TRUST LAND TRANSFER PROGRAM

Account Distribution

1989 - 2011

Total Appropriated: \$738,080,000

Schools (CSCA) 83.1%

Land Replacement 14.9%

Admin Costs 1.9%

Recipients

NAP/NRCA 50.5%

State Parks 18.1%

Counties/Cities 18.6%

State Fish & Wildlife 3.3%



TRUST LAND TRANSFER PROGRAM

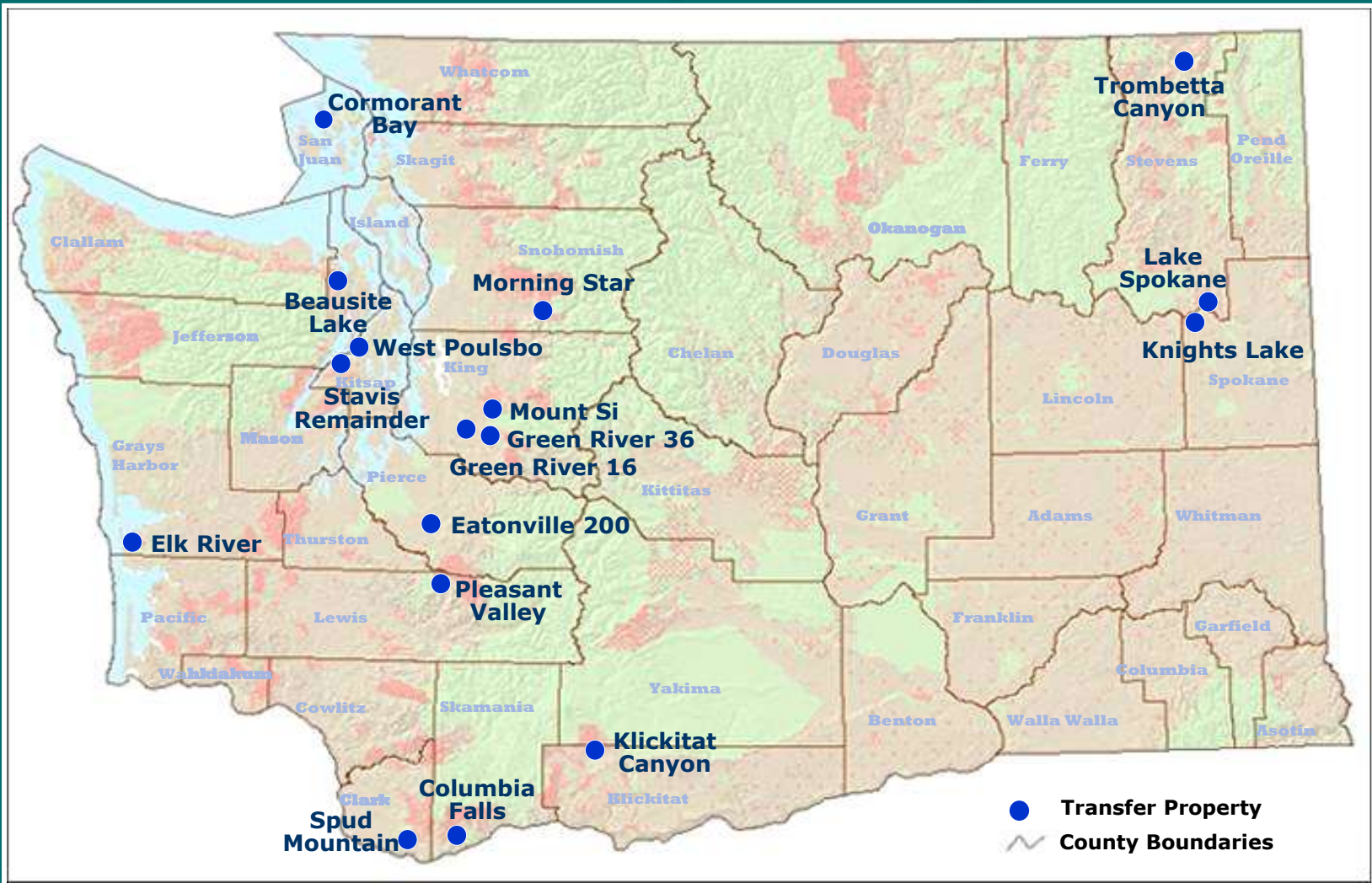
2013-2015 Legislation

- Appropriation: \$56,045,000.00
- 17 fee transfers
- Properties to receive deed restriction for public uses
- Timber value to CSCA by 9/30/13
- \$300,000 for state trust land inventory evaluation



TRUST LAND TRANSFER PROGRAM

2013-2015 Proposed Properties



TRUST LAND TRANSFER PROGRAM

13-15 Recipients

DNR – NAP & NRCA

State Parks

King County

Jefferson County

Spokane County

Clark County

San Juan County

Kitsap County

Stevens County (Lk Spokane Parks District)

Green River CC

Tacoma Public
Utilities



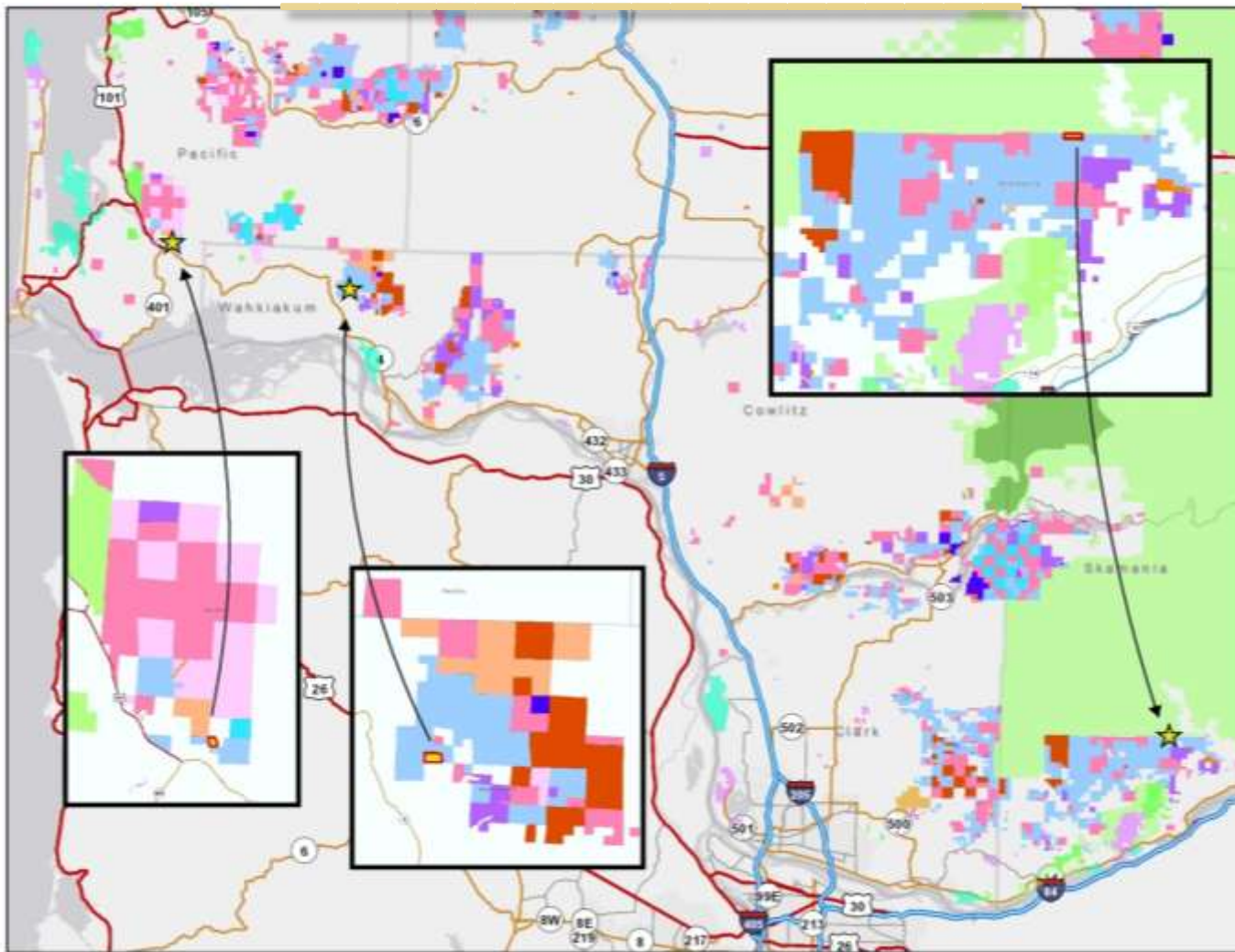
STATE FOREST TRUST REPLACEMENT PROGRAM

Purpose

- Authorized in 2011-2013 Biennium
- State Forest trust properties transferred to NRCA status due to federal Endangered Species Act encumbrances
- Timber value distributed as if harvested
- Land value held to buy replacement property



STATE FOREST REPLACEMENT PROGRAM



STATE FOREST REPLACEMENT PROGRAM

11-13 Projects

- Wahkiakum County
- Skamokawa Creek NRCA 67 acres

- Skamania County
- Stevenson Ridge NRCA 85 acres

- Pacific County
- Naselle Highlands NRCA 28 acres

- 13-15 Appropriation: \$1.5 million

