



Little Spokane River Project, Pend Oreille County.

AFTER

BEFORE

Family Forest Fish Passage Program

2022

**IMPLEMENTATION
REPORT**

**A Cost-Share Program
for Small Forest
Landowners
to Improve Fish
Passage**



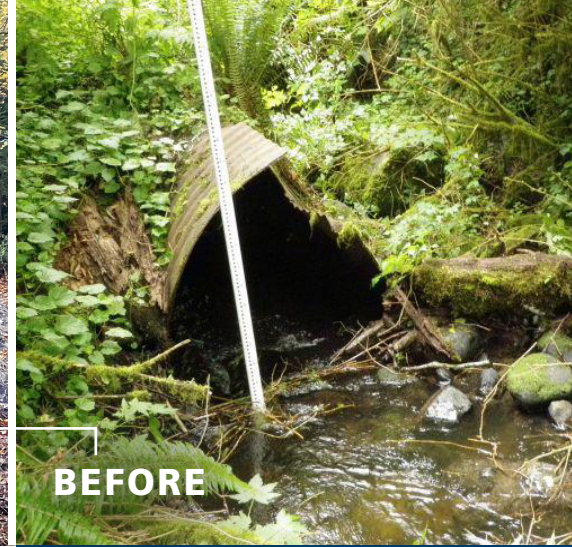
Washington
Department of
**FISH and
WILDLIFE**



WASHINGTON STATE
Recreation and
Conservation Office



WASHINGTON STATE DEPT OF
**NATURAL
RESOURCES**



Investment in Removal of Fish Barriers Pays Many Dividends



Small forest landowners own 2.8 million acres of Washington's forestland in the state. Their income contributes to Washington state's annual \$16 billion forestry economy and helps sustain many rural communities. At the same time, these family forests provide cold, clean water to thousands of miles of fish-bearing streams. Crossing those streams, in many cases, are roads.

With the 1999 Forests and Fish rules, new regulations were established that required all forest landowners to remove fish barriers on streams associated with forest road crossings. To small forest landowners, the cost can be substantial and, potentially, influence their decisions about converting their forestlands to other uses. Recognizing these potential impacts, the 2003 Washington State Legislature created the Family Forest Fish Passage Program to help reduce

the regulatory and monetary burdens on small forest landowners and to restore habitat for fish.

Responsible owners of small woodlands and forests have been working with the state to take action. Since 2003, the program has paid dividends: 1,264 miles of fish habitat have been reconnected and 452 fish barriers have been eliminated. It is estimated that for every \$100,000 invested in fish passage projects, 1.57 local jobs* are created during the construction season. This estimate does not include the additional indirect jobs created such as manufacturing culverts and bridges. Thanks to a new round of funding from the Legislature, the program is poised to do a lot more.

* This estimate is based on guidance from the federal Office of Management and Budget issued on December 18, 2009 and this statement is extracted from *Jobs in the Woods Publication #10-10-069*.

CALENDAR YEAR 2022

452

FISH BARRIERS ELIMINATED SINCE 2003



For every \$100,000 invested in fish passage projects, about 1.57 local jobs* are created during construction season.

1,264 miles

OF FISH HABITAT RECONNECTED SINCE 2003

“THE WORK IS FIRST CLASS. EVERYONE FROM THE INITIAL INSPECTION TO THE CONTRACTOR WERE VERY INFORMATIVE AND HELPFUL.”

THOMAS ATKINS
LANDOWNER

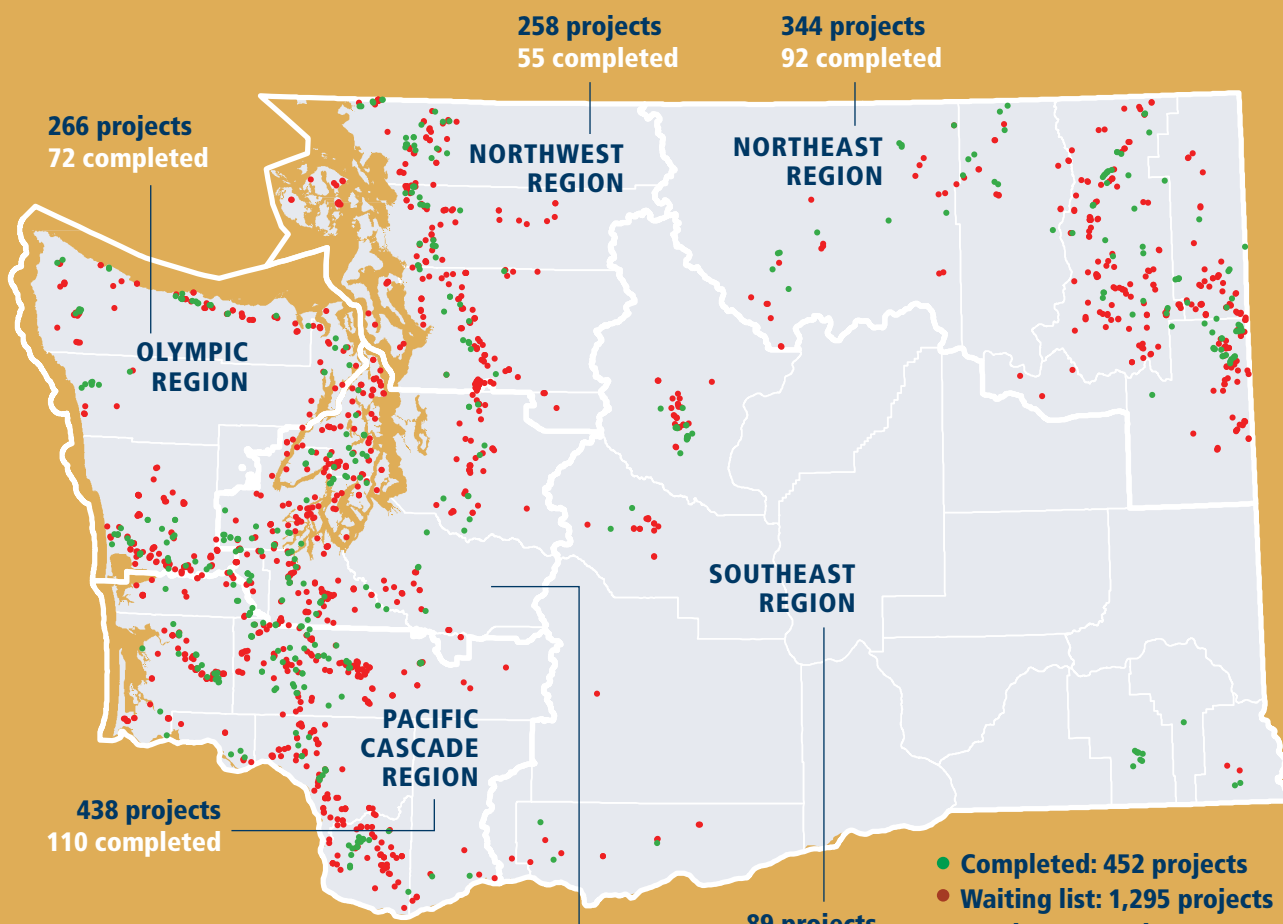


BEFORE



AFTER

Starbird Creek Project
Skagit County.



● Completed: 452 projects
 ● Waiting list: 1,295 projects
Total: 1,747 projects
Habitat gain (est.): 1,264 miles

Regions on map are DNR regions.

* Projects from June 30, 2003 to November 25, 2022. In February 2014, DNR adjusted the boundaries of the Olympic, South Puget Sound, and Pacific Cascade regions. As a result, the number of projects in each of the three regions differs from those published previously.

FAMILY FOREST FISH PASSAGE PROJECTS 2003-2022*

VIDEO HIGHLIGHTS PROGRAM BENEFITS

A continued outreach effort to locate the highest quality projects is a key to the success of the Family Forest Fish Passage Program. To assist with outreach, the program created an informational video showcasing the benefits to landowners, fish, and rural communities. Watch the video online at: dnr.wa.gov/fffpp



dnr.wa.gov/fffpp



THE FFFPP IS A WONDERFUL PROGRAM THAT HELPS SAVE OUR SALMON SPAWNING RIVERS AND CREEKS. EXTREMELY SATISFIED. WE DID NOT HAVE THE KNOWLEDGE OR SKILLS TO MANAGE A PROJECT OF THIS SIZE."

DAVID BERNHARDT
LANDOWNER

ROAD TO RECOVERY

The Family Forest Fish Passage Program is implemented by three state agencies: the Department of Fish and Wildlife, the Department of Natural Resources, and the Recreation and Conservation Office. Each agency brings its expertise to oversee the program's operations, outreach, and project selection processes. A steering committee approves annual projects and keeps procedures current. The Washington Farm Forestry Association is an active member of the steering committee as a landowner organization.

The Family Forest Fish Passage Program recognizes the critical role that small family forest landowners play in restoring salmon and trout populations. It also recognizes the important economic benefits that small

forest landowners provide Washington's economy. The Family Forest Fish Passage Program benefits include:

- Creating jobs and economic opportunities in rural communities.
- Honoring and implementing tribal treaty fishing rights.
- Sustaining our forest industry and encouraging renewable green products.
- Improving water quality by reducing the amount of sediment entering streams and spawning areas.
- Minimizing flooding and the downstream harm to habitat and property.
- Helping implement salmon recovery plans.

Local Groups are the Cornerstone to the Program

Most Family Forest Fish Passage Program projects are completed by local groups or sponsors experienced in fish passage corrections. These sponsors oversee project design, construction, permitting, billing, and grant management. A sponsor may be a conservation district, regional fisheries enhancement group, local fish-related nonprofit organization, tribe, or other interested organization.

PROJECT SPONSORS

COUNTY CONSERVATION DISTRICTS

Asotin, Cascadia, Clallam, Chelan, Clark, Cowlitz, East Klickitat, Ferry, Grays Harbor, Jefferson, King, Kitsap, Kittitas, Lewis, Mason, Okanogan, Pacific, Pend Oreille, Skagit, Snohomish, Spokane, Stevens, Thurston, Underwood, Wahkiakum.

SALMON ENHANCEMENT GROUPS

Adopt a Stream
 Cascade Fisheries
 Chehalis Basin Fisheries Task Force
 Cascade Fisheries
 Chelan County Department of Natural Resources
 Hood Canal Salmon Enhancement Group
 Kittitas Conservation Trust
 Lower Columbia Fish Enhancement Group
 Methow Salmon Recovery Foundation
 Mid-Sound Salmon Enhancement Group
 Nooksack Salmon Enhancement Group
 North Olympic Salmon Coalition
 Pacific Coast Salmon Coalition
 Pacific County Anglers Skagit Fisheries Enhancement Group
 South Puget Sound Salmon Enhancement Group
 Sound Salmon Solutions
 Stilly-Snohomish Task Force
 Tri-State Steelheaders
 Wild Fish Conservancy
 Willapa Bay Fisheries Enhancement Group

TRIBES

Confederated Tribes of the Colville Reservation
 Confederated Tribes and Bands of the Yakama Nation
 Cowlitz Indian Tribe
 Kalispel Tribe of Indians
 Lower Elwha Klallam Tribe
 Nooksack Indian Tribe
 Spokane Tribe of Indians
 Stillaguamish Tribe of Indians
 Tulalip Tribes

Program Partners

PROGRAM ADMINISTRATION
Department of Natural Resources Small Forest Landowner Office
 P.O. Box 47012
 Olympia, WA 98504-7012
 Chris Dwight: 360-490-0020
dnr.wa.gov/sflo

PROJECT EVALUATION & RANKING
Department of Fish and Wildlife Habitat Program
 600 Capitol Way
 Olympia, WA 98501-1091
 Daniel Barrett: 360-870-2195
 TTY: 360-902-2207
wdfw.wa.gov

PROGRAM FUNDING
Recreation and Conservation Office
 P.O. Box 40917
 Olympia, WA 98504-0917
 Sandy Dotts: 360-628-9487
 TDD: 360-902-1996
rco.wa.gov

LANDOWNER ORGANIZATION
Washington Farm Forestry Association
 P.O. Box 1010
 Chehalis, WA 98532
fffpp@wafarmforestry.com
wafarmforestry.com

The above agencies are responsible for implementing the program. The Washington Farm Forestry Association joins the agencies on a steering committee.

GET MORE INFORMATION



dnr.wa.gov/fffpp