

Planning for Recreation Access Grant Program

2026 Grant Schedule

(Consult the PRA web page for updates)

- May 13: PRISM Online open for applications
- July 15: Applications due

Grant Limits

- Comprehensive Plans: \$100,000
- Site Specific Plans: \$200,000
- No match required

Who May Apply?

- Towns, cities, counties
- Federally recognized Tribes
- Special purpose districts (ports, schools, parks, conservation, etc.)
- Qualified nonprofit organizations

How to Apply

For details, visit

<https://rco.wa.gov/grant/plan-rec-access/>

Recreation and Conservation Office

PO Box 40917

Olympia WA 98504-0917

Telephone: (360) 902-3000

Washington Telecommunications

Relay Service, dial 711

Email: info@rco.wa.gov

Website: <https://rco.wa.gov/>

Grants for Community-Led Planning to Expand Outdoor Recreation Access

The Planning for Recreation Access (PRA) grant program, created in 2021 by the Washington State Legislature, provides planning grants to help communities with limited outdoor access identify recreation needs, engage their residents, and develop plans that improve access and support future recreation investments. The planning grants are for outdoor facilities open to the public.

Grant Categories

Community-wide comprehensive plans that do the following:

- Assess existing conditions and gaps
- Set long-term visions, priorities, and timelines
- Engage the community in the planning process
- Establish eligibility in Recreation and Conservation Office grant programs that require planning

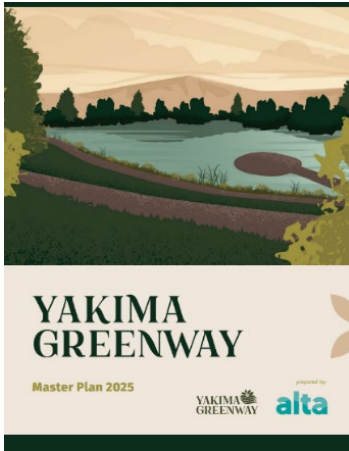
Site-specific plans that may include the following:

- Feasibility studies
- Architectural and engineering designs
- Environmental and cultural resource surveys
- Construction-ready plan sets
- Permitting

Eligible Planning Costs

- Consultant and contract services
- Staff time
- Community outreach
- Project administration

Previously Funded Project Examples

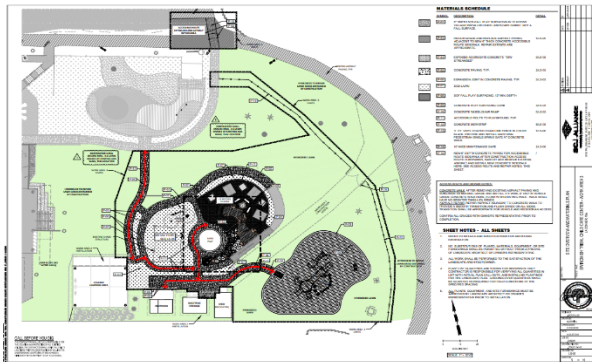
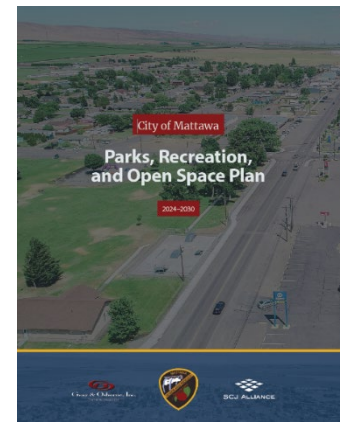


Yakima Greenway Foundation: Renewing the Yakima Greenway Master Plan

The Yakima Greenway Foundation used a \$75,322 PRA grant to hire a consultant to update its master plan that was updated last in 1995. The plan covers twenty miles and includes identifying priorities through community engagement and developing plans to incorporate accessibility and education opportunities, improve safety and road crossings, and accommodate multiple user groups.

City of Mattawa: Parks, Recreation, and Open Space Plan (PROS Plan)

The City of Mattawa, population 3,335, used a \$60,000 PRA grant to hire a consultant to guide the creation of its first PROS Plan. The project included involving stakeholders to develop a needs assessment, conducting a landscape inventory and analysis, establishing mission and vision statements, defining community goals and objectives, developing a strategic plan, setting priorities, and creating conceptual plans and a timeline for a capital improvement program.

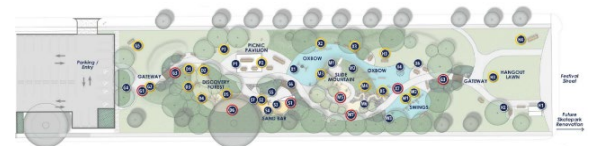


Swinomish Indian Tribal Community: Swinomish Tribe Playspace Design

The Swinomish Indian Tribal Community used a \$45,000 PRA grant to create construction-ready plans and designs for the renovation of a playground. The goals of the project were to improve safety and accessibility, provide protection from the weather, enhance learning opportunities, and better reflect community values. This project completed the final two phases of a three-phased planning project.

City of Longview: Cloney Park Inclusive Playground Design

The City of Longview used a \$250,000 PRA grant to pay for architectural designs, construction blueprints, engineering plans, and permits to redesign a park. The designs included a fully inclusive playground and restrooms and upgrades to the parking lot and lighting. The City received development funds in the following grant cycle, and the ribbon cutting will be held in 2026.



*"When we design for every **body**, we design for **everybody!**"*

Links to projects featured above: [Capitol Land Trust](#), [Yakima Greenway Trust](#), [City of Mattawa](#), [Swinomish Indian Tribal Community](#), [City of Longview](#).